

VILLA_PESQUERA

An architectural rendering of a modern villa named Villa Pesquera. The building features a prominent white, angular roof structure with large overhanging eaves. The facade is composed of white walls and large glass windows. In the foreground, there is a swimming pool with a wooden deck. The interior is visible through the glass, showing a modern living space with white furniture and large potted plants. The sky is a clear blue with some light clouds.

Modern Turn-key Villa
El Ingenio
San Pedro Beach side
Completion November 2025
€ 2.100.000 (plus Vat)

VILLA_PESQUERA

El Ingenio, c/ Camino de la Iglesia 371, San Pedro de Alcántara

Close to Boulevard and Beach

375 m² Built interior + 180 m² Terraces

5 bedrooms en suite

502 m² Plot

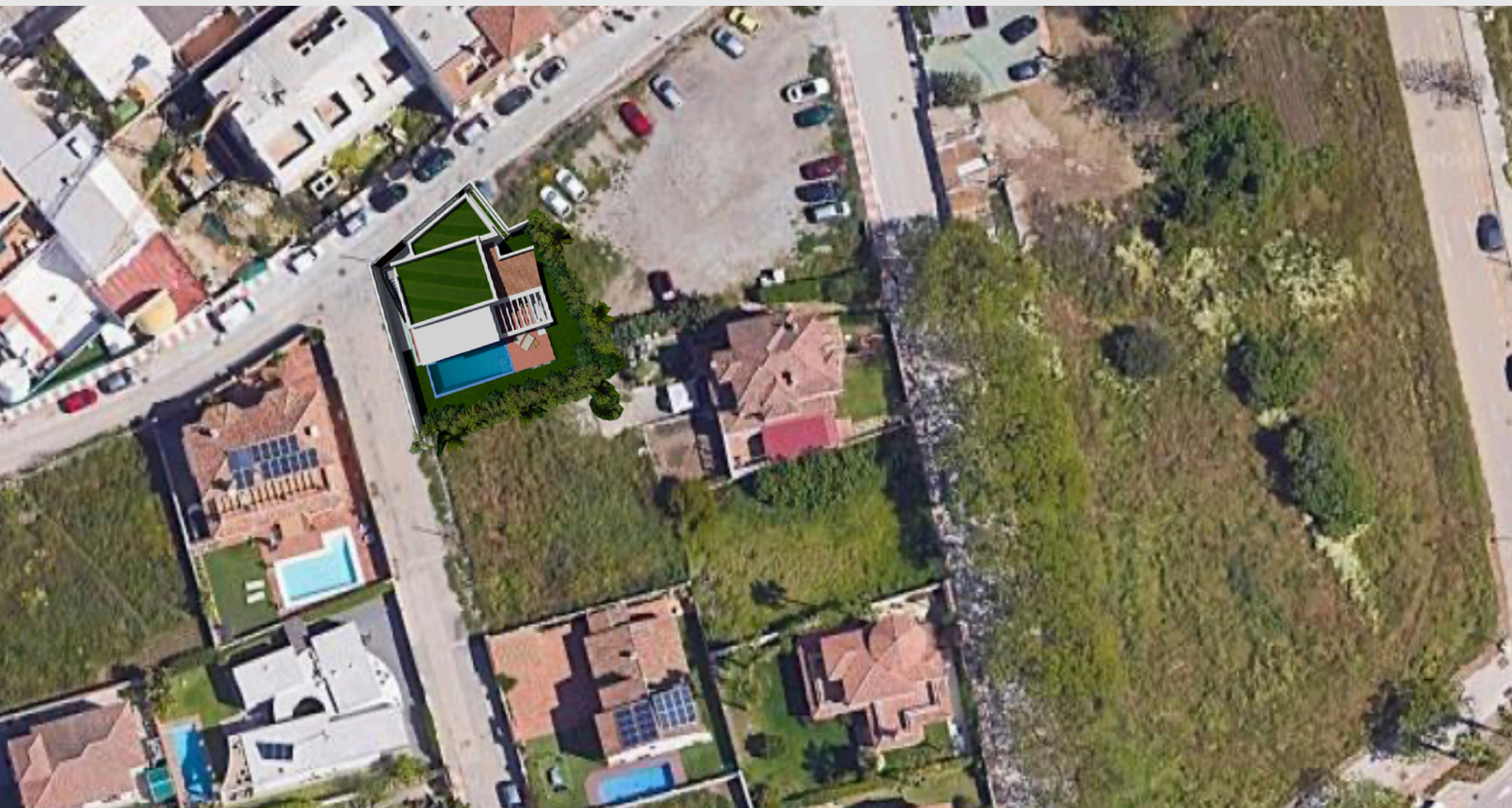
Completion November 2025

2.100.000 € (+ Vat)



VILLA PESQUERA

VILLA PESQUERA



VILLA PESQUERA



VILLA PESQUERA



VILLA PESQUERA



VILLA PESQUERA



VILLA PESQUERA



VILLA PESQUERA



VILLA PESQUERA



VILLA PESQUERA

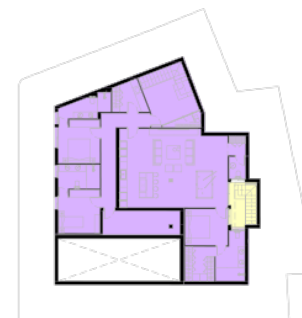
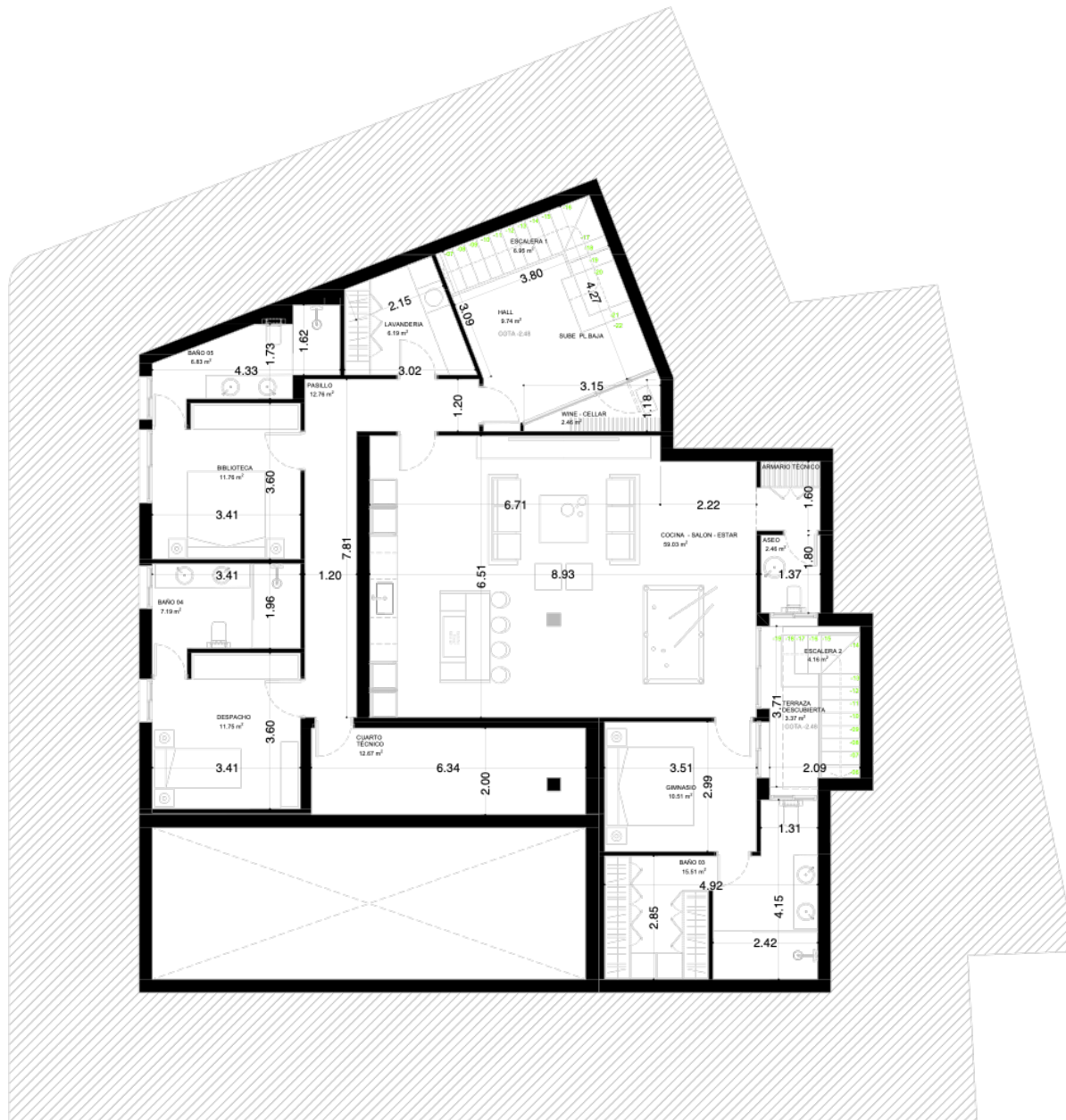


VILLA PESQUERA



VILLA PESQUERA

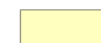
GARDEN FLOOR



Garden floor built square meters



Living Area: 201.56m²

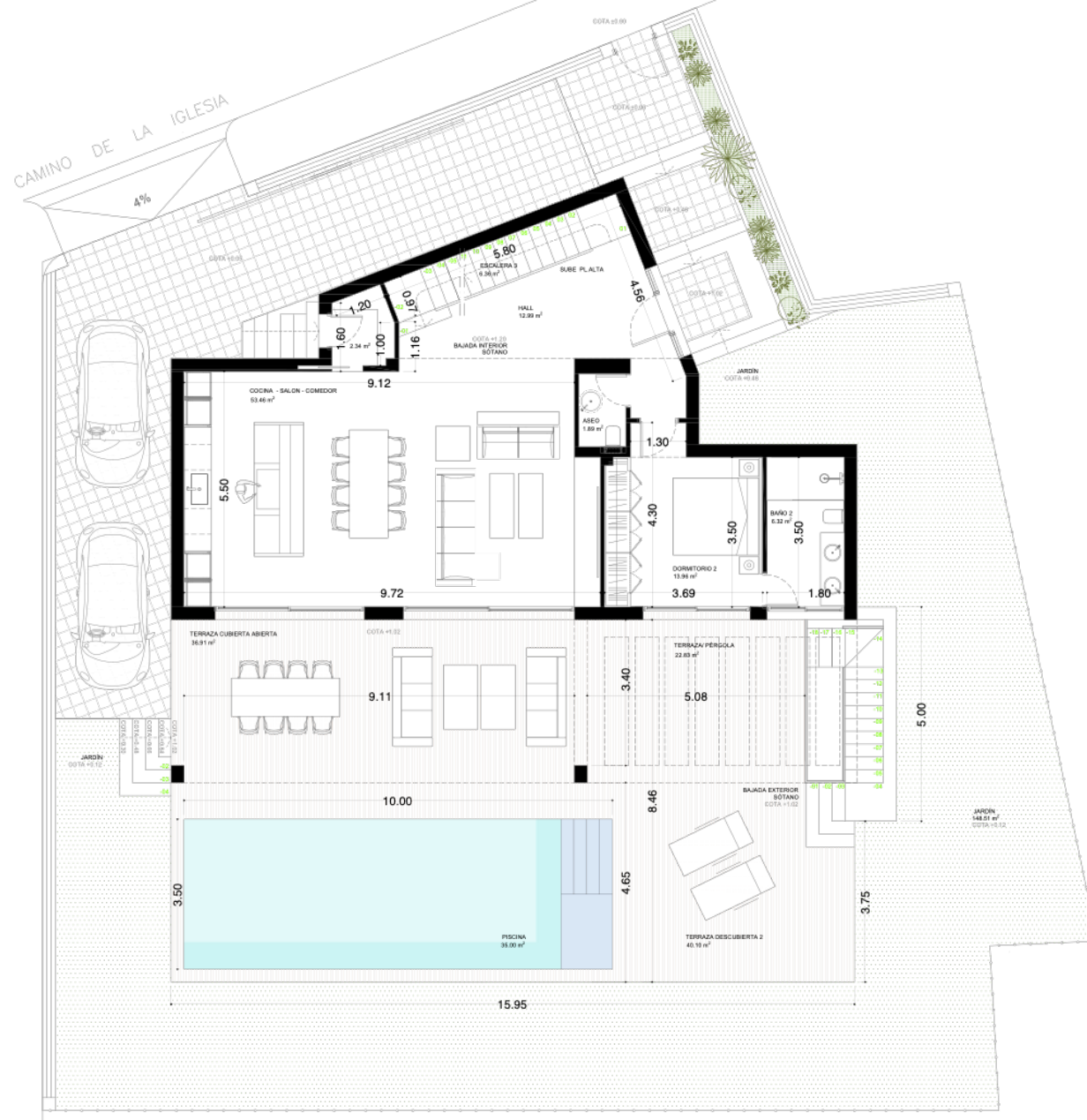


Terrace: 9,18m²

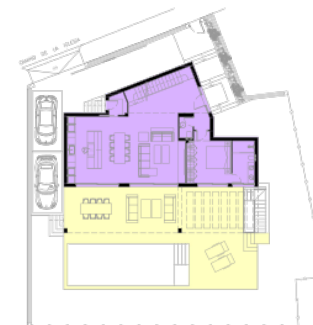
VILLA PESQUERA

Floor plans

The surfaces depicted here correspond to the project's initial phases, the final surfaces will be those attached to the sales contract corresponding to the constructed project. Non-contractual or binding document: The information and graphic material appearing in this document are purely indicative, have no contractual value, and therefore may undergo modifications for various reasons, all dependant on technical or legal requirements bound to site and execution of works. The render images and drawings included in this brochure are for illustrative purposes only and may depict additional features such as landscaping, furniture, and lighting, which are not included in the actual property sale. Potential buyers are advised to refer to the detailed property listing and consult with the real estate agent for an accurate description of the property's features and inclusions. You may refer to the Decreto 218/2005 Junta de Andalucía, at your disposal in our offices.



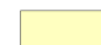
GROUND FLOOR



Ground floor built square meters



Living Area: 113.51m²



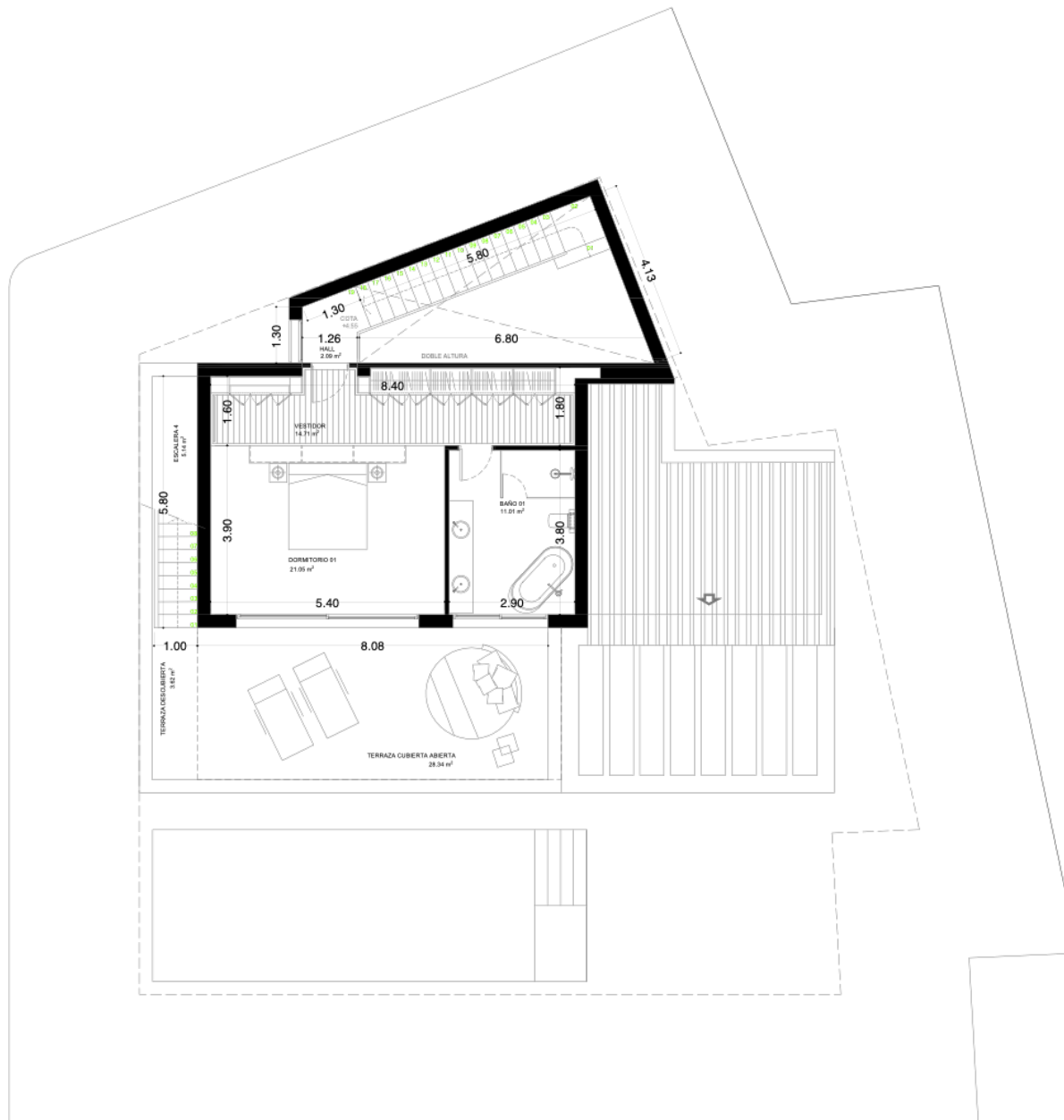
Terrace: 129.70m²

VILLA PESQUERA

Floor plans

The surfaces depicted here correspond to the project's initial phases, the final surfaces will be those attached to the sales contract corresponding to the constructed project. Non-contractual or binding document: The information and graphic material appearing in this document are purely indicative, have no contractual value, and therefore may undergo modifications for various reasons, all dependant on technical or legal requirements bound to site and execution of works. The render images and drawings included in this brochure are for illustrative purposes only and may depict additional features such as landscaping, furniture, and lighting, which are not included in the actual property sale. Potential buyers are advised to refer to the detailed property listing and consult with the real estate agent for an accurate description of the property's features and inclusions. You may refer to the Decreto 218/2005 Junta de Andalucía, at your disposal in our offices.

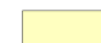
FIRST FLOOR



First floor built square meters



Living Area: 61.54m²



Terrace: 45.06m²

VILLA PESQUERA

Floor plans

The surfaces depicted here correspond to the project's initial phases, the final surfaces will be those attached to the sales contract corresponding to the constructed project. Non-contractual or binding document: The information and graphic material appearing in this document are purely indicative, have no contractual value, and therefore may undergo modifications for various reasons, all dependant on technical or legal requirements bound to site and execution of works. The render images and drawings included in this brochure are for illustrative purposes only and may depict additional features such as landscaping, furniture, and lighting, which are not included in the actual property sale. Potential buyers are advised to refer to the detailed property listing and consult with the real estate agent for an accurate description of the property's features and inclusions. You may refer to the Decreto 218/2005 Junta de Andalucía, at your disposal in our offices.