

TURN-KEY VILLA FOR SALE

VILLA_TELVA

C/ADELFA 63
ALTAVISTA
SAN PEDRO DE ALCÁNTARA
MARBELLA



VILLA_TELVA

Modern Turn-Key Villa in the heart of San Pedro on large plot surrounded by green areas
with views on sea and mountain

Close to beach, town center and Puerto Banús

6 bedrooms en suite

710 m2 living space + 439 m2 terraces + underground parking

1.305 m2 plot

Completion Autumn 2026

3.950.000€ (plus Vat)



















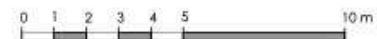








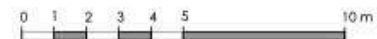
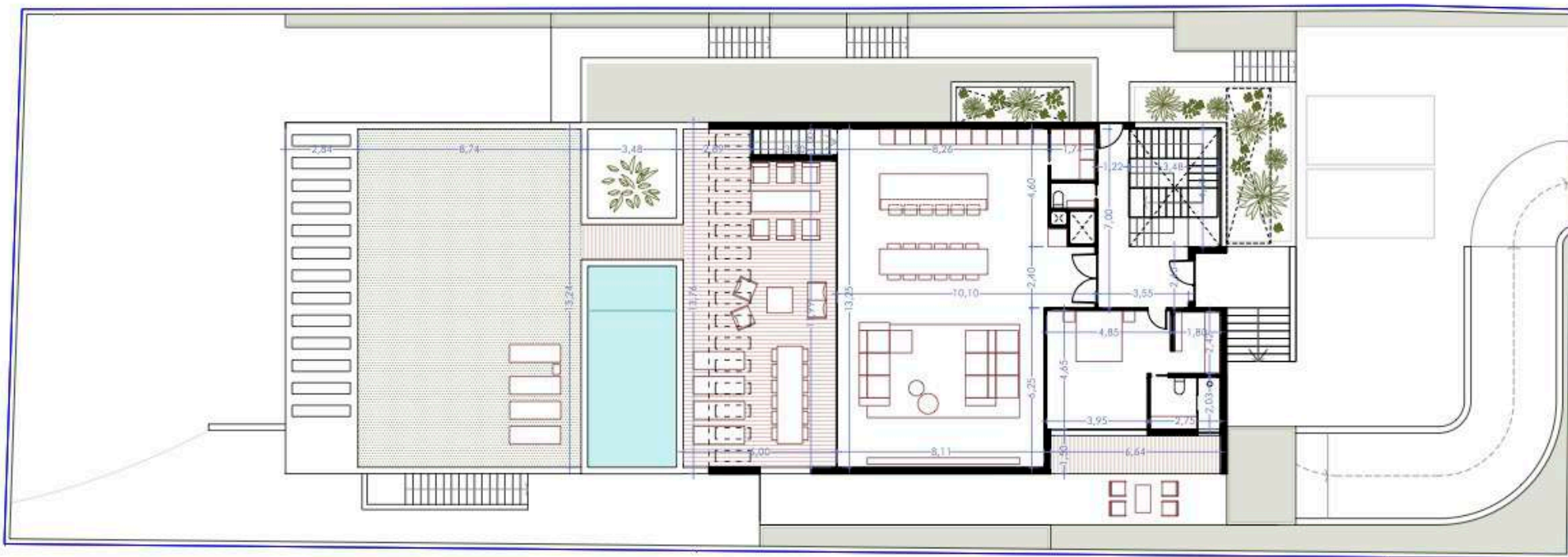




VILLA_TELVA

Planta de Distribución

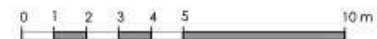
The render images and drawings included in this brochure are for illustrative purposes only and may depict additional features such as landscaping, furniture, and lighting, which are not included in the actual property sale. Potential buyers are advised to refer to the detailed property listing and consult with the real estate agent for an accurate description of the property's features and inclusions.



VILLA_TELVA

Planta de Distribución

The render images and drawings included in this brochure are for illustrative purposes only and may depict additional features such as landscaping, furniture, and lighting, which are not included in the actual property sale. Potential buyers are advised to refer to the detailed property listing and consult with the real estate agent for an accurate description of the property's features and inclusions.



VILLA_TELVA

Planta de Distribución

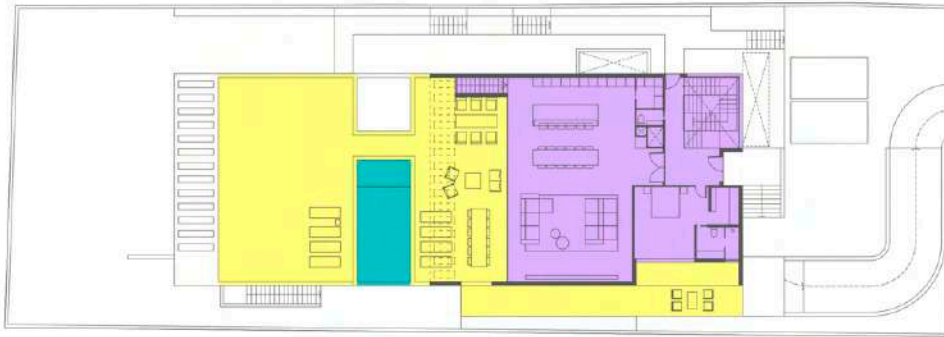
The render images and drawings included in this brochure are for illustrative purposes only and may depict additional features such as landscaping, furniture, and lighting, which are not included in the actual property sale. Potential buyers are advised to refer to the detailed property listing and consult with the real estate agent for an accurate description of the property's features and inclusions.



PLANTA JARDIN
366.00 m²

TERRAZA
34.40 m²

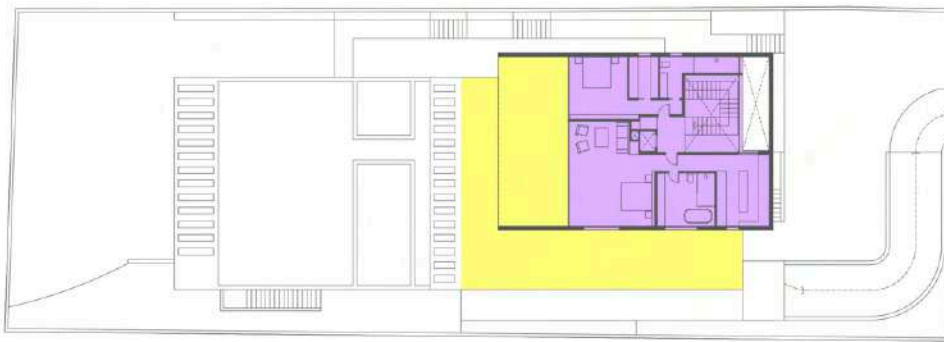
PARKING SUBTERRÁNEO
127.30 m²



PLANTA PRINCIPAL
202.40 m²

TERRAZA
258.30 m²

PISCINA
27.40 m²



PLANTA ALTA
142.40 m²

TERRAZA
146.60 m²

The render images and drawings included in this brochure are for illustrative purposes only and may depict additional features such as landscaping, furniture, and lighting, which are not included in the actual property sale. Potential buyers are advised to refer to the detailed property listing and consult with the real estate agent for an accurate description of the property's features and inclusions.

TOTAL VIVIENDA **710.80 m²**
TOTAL TERRAZAS **439.30 m²**

For more information please contact:

Benita von Meding
VillaVista Developments S.L.
benita@meding.eu
Tel. +34 670264774
(English, Español, Deutsch)

